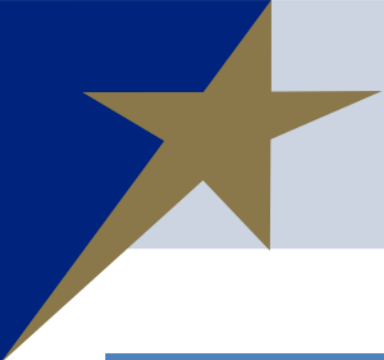


Demographic Characteristics and Trends: Austin and San Antonio Metro Areas

Austin and San
Antonio Growth
Summit
September 14, 2012
San Marcos, Texas



Population Growth in San Antonio MSA, 1980-2040

County	1980	1990	2000	2010	2040
Atascosa	25,055	30,533	38,628	44,911	68,909
Bandera	7,084	10,562	17,645	20,485	26,829
Bexar	988,800	1,185,394	1,392,931	1,714,773	1,991,001
Comal	36,446	51,832	78,021	108,472	203,832
Guadalupe	46,708	64,873	89,023	131,533	248,754
Kendall	10,635	14,589	23,743	33,410	66,124
Medina	23,164	27,312	39,304	46,006	54,466
Wilson	16,756	22,650	32,408	42,918	92,071
Total	1,154,648	1,407,745	1,711,703	2,142,508	2,751,986

Sources: 1980-2010. U.S. Census Bureau Counts: State Data Center 2000-2007 Migration Scenario Projection



Population Growth in Austin-Round Rock MSA, 1980-2040

County	1980	1990	2000	2010	2040
Bastrop	24,726	38,263	57,733	74,171	311,306
Caldwell	23,637	26,392	32,194	38,066	64,262
Hays	40,594	65,614	97,589	157,107	581,488
Travis	419,573	576,407	812,280	1,024,266	1,181,101
Williamson	76,521	139,551	249,967	422,679	1,363,538
Total	585,051	846,227	1,249,763	1,716,289	3,501,695

Sources: 1980-2010. U.S. Census Bureau Counts; 2040: State Data Center 2000-2007 Migration Scenario Projection



Components of Change for San Antonio MSA, 2000 to 2009

County	Population			Births- Deaths	Migration	
	2000	2009	Change		Foreign	Domestic
Atascosa	38,628	44,633	6,005	3,168	365	2,727
Bandera	17,645	20,560	2,915	165	130	2,689
Bexar	1,392,931	1,651,448	258,517	140,886	29,689	96,635
Comal	78,021	114,525	36,504	4,473	969	31,179
Guadalupe	89,023	121,432	32,409	6,284	1,532	24,888
Kendall	23,743	34,053	10,310	722	359	9,171
Medina	39,304	44,728	5,424	2,127	171	3,356
Wilson	32,408	40,749	8,341	1,621	46	6,802
Total	1,711,703	2,072,128	360,425	159,446	33,261	177,447

Source: U.S. Bureau of the Census Counts (2000); Estimate (2009)



Components of Change for Austin-Round Rock MSA, 2000 to 2009

County	Population			Births- Deaths	Migration	
	2000	2009	Change		Foreign	Domestic
Bastrop	57,733	74,876	17,143	3,990	1,308	12,027
Caldwell	32,194	37,810	5,616	2,301	496	2,977
Hays	97,589	155,545	57,956	10,905	1,697	45,351
Travis	812,280	1,026,158	213,878	102,653	58,855	56,907
Williamson	249,967	410,686	160,719	37,705	5,965	116,977
Total	1,249,763	1,705,075	455,312	157,554	68,321	234,239

Source: U.S. Bureau of the Census Counts (2000); Estimate (2009)

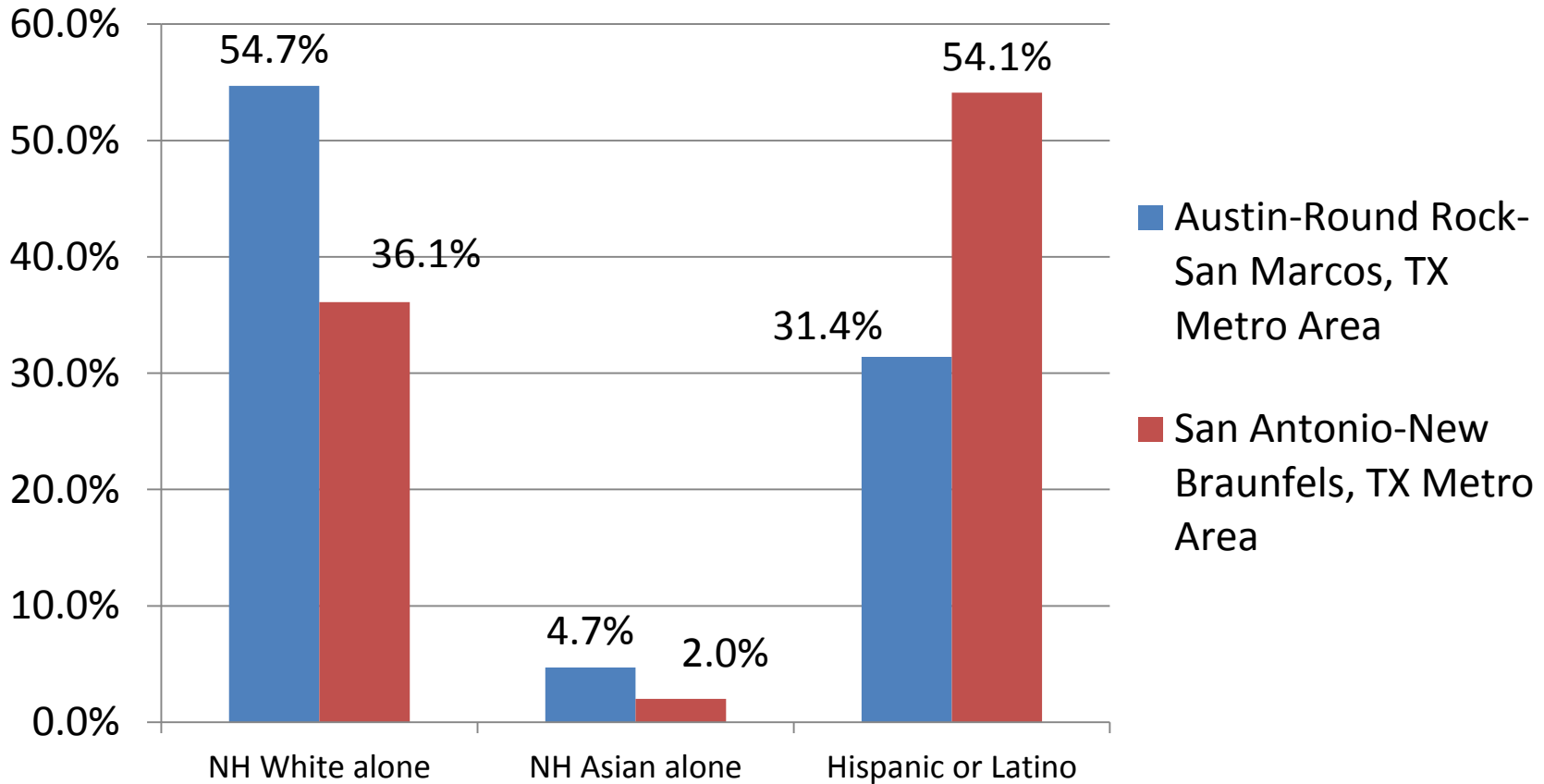


Population, Age, Household and Family Size, Austin and San Antonio Metro Areas, 2010

	Austin-Round Rock-San Marcos, TX Metro Area	San Antonio-New Braunfels, TX Metro Area
Population	1,716,289	2,142,508
Median age (years)	32.6	34.1
Average household size	2.58	2.74
Average family size	3.21	3.29



Selected Race and Ethnic Composition of Austin and San Antonio Metro Areas, 2010



Source: U.S. Census Bureau, 2010 Census

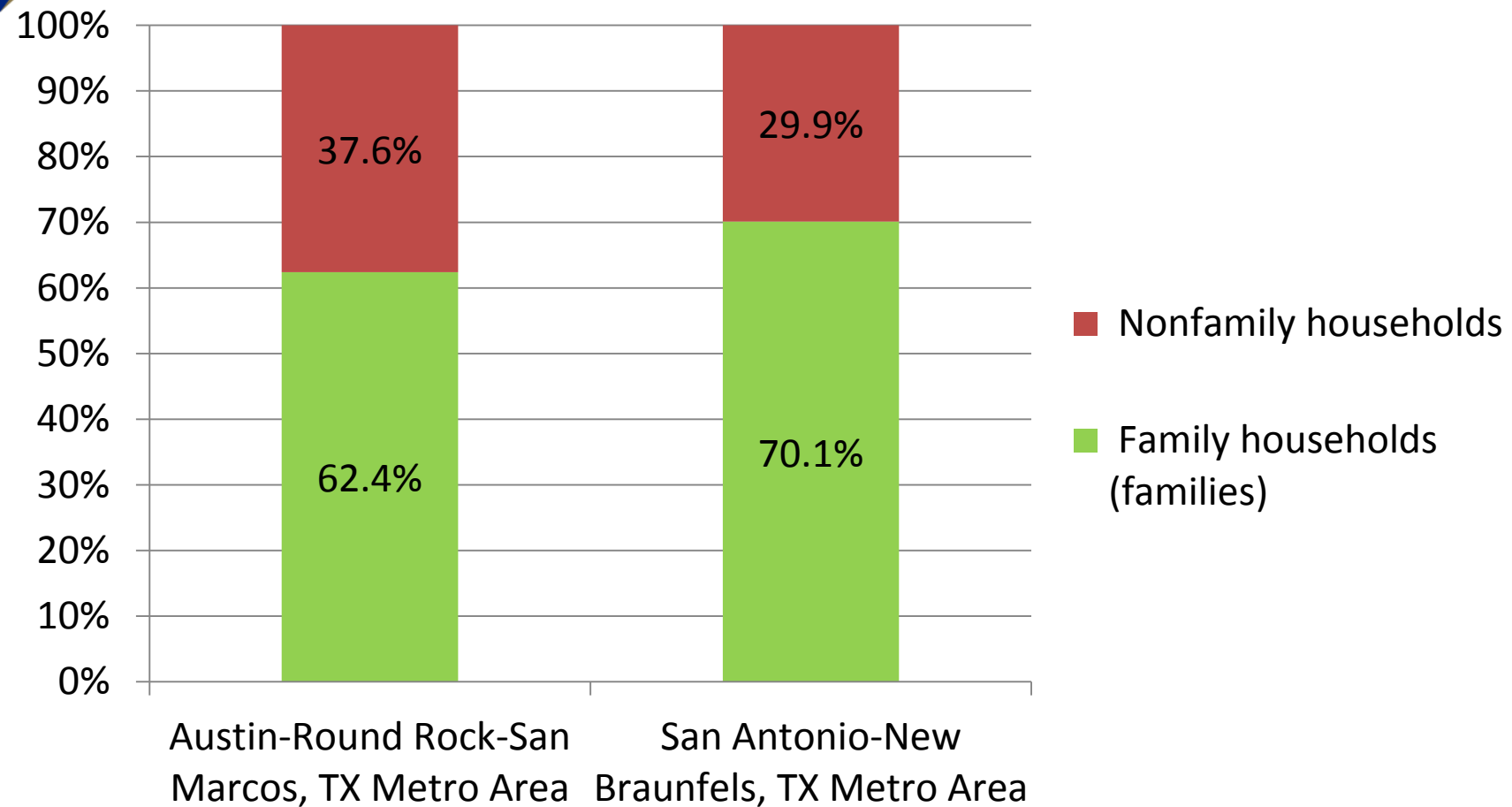


Households and Grandparents, Austin and San Antonio Metro Areas, 2010

	Austin-Round Rock-San Marcos, TX Metro Area	San Antonio-New Braunfels, TX Metro Area
Total households	647,500	749,906
Family households (families)	62.4%	70.1%
Nonfamily households	37.6%	29.9%
Grandparents		
Number of grandparents living with own grandchildren under 18 years	33,556	63,564
Responsible for grandchildren	34.1%	44.5%

Source: U.S. Census Bureau, 2010 Census

Household Type, Austin and San Antonio Metro Areas, 2010



Source: U.S. Census Bureau, 2010 Census



Household and Family Income, San Antonio and Austin Metro Areas, 2010

	Austin-Round Rock-San Marcos, TX Metro Area	San Antonio-New Braunfels, TX Metro Area
Total households	647,500	749,906
Percent of HH with income less than \$10,000	7.0%	7.9%
Percent of HH with income \$200,000 or more*	5.0%	3.2%
Median household income (dollars)*	\$ 55,744	\$ 50,225
Mean household income (dollars)*	\$ 74,348	\$ 65,367

Source: U.S. Census Bureau, American Community Survey, 1-Year Sample, 2010

* MSAs are significantly different at $p < .05$



Educational Attainment Among Adults (25 Years +) San Antonio and Austin Metro Areas, 2010

	Austin-Round Rock-San Marcos, TX Metro Area	San Antonio- New Braunfels, TX Metro Area
Less than 9th grade*	6.5%	8.7%
Graduate or professional degree*	13.7%	9.1%
Percent high school graduate or higher*	87.5%	82.5%
Percent bachelor's degree or higher*	39.4%	25.4%

Source: U.S. Census Bureau, American Community Survey, 1-Year Sample, 2010

* MSAs are significantly different at $p < .05$



Geographic Mobility and Nativity, Austin and San Antonio Metro Areas, 2010

	Austin-Round Rock-San Marcos, TX Metro Area	San Antonio- New Braunfels, TX Metro Area
Lived in the same house one year ago*	77.1%	81.5%
Native*	85.7%	87.7%
Born in Texas*	56.7%	64.5%

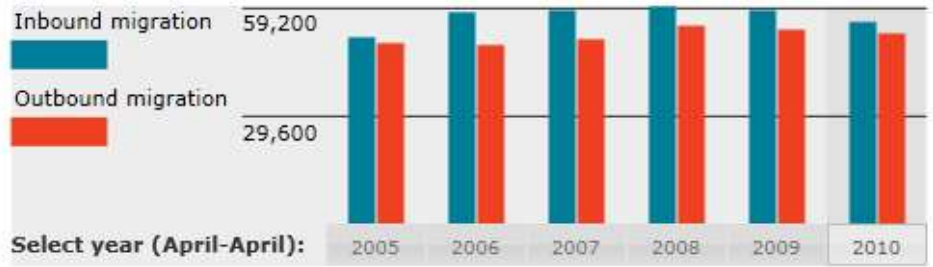
Source: U.S. Census Bureau, American Community Survey, 1-Year Sample, 2010

* MSAs are significantly different at $p < .05$

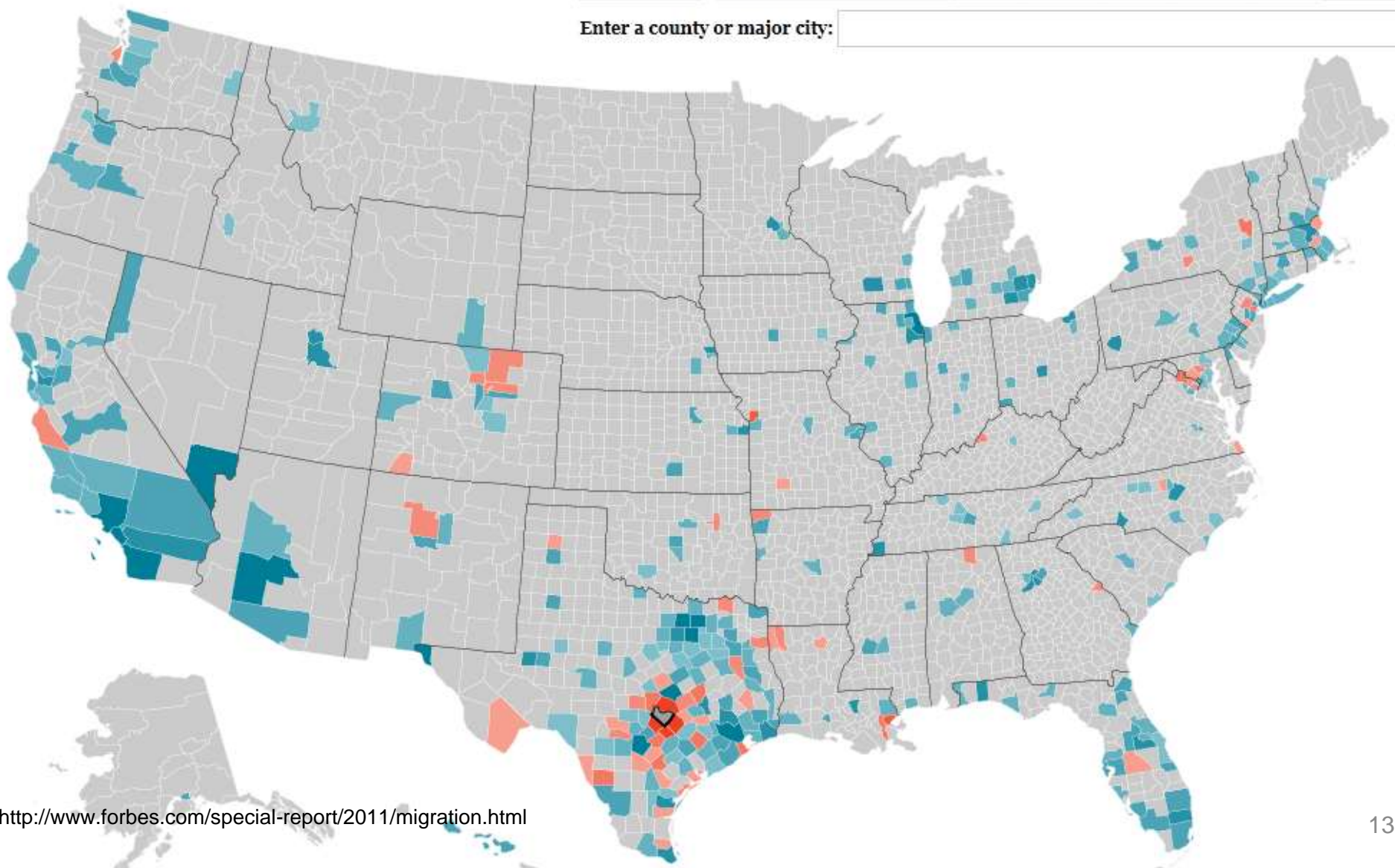
Travis County (Austin), Texas

Population (2010): 1,024,266
Population (2005): 891,266
Inbound income per cap. (2010): \$27,700
Outbound income per cap. (2010): \$24,600
Non-migrant income per cap. (2010): \$30,000

Show Lines
✕ Clear
↗ Share



Enter a county or major city:



Bexar County (San Antonio), Texas

Population (2010): 1,714,773

Population (2005): 1,529,270

Inbound income per cap. (2010): \$20,400

Outbound income per cap. (2010): \$21,600

Non-migrant income per cap. (2010): \$21,000

Show Lines
✖ Clear
🔗 Share

Inbound migration 73,400

Outbound migration

36,700

Select year (April-April):

2005

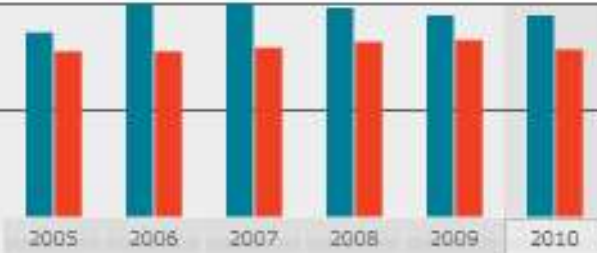
2006

2007

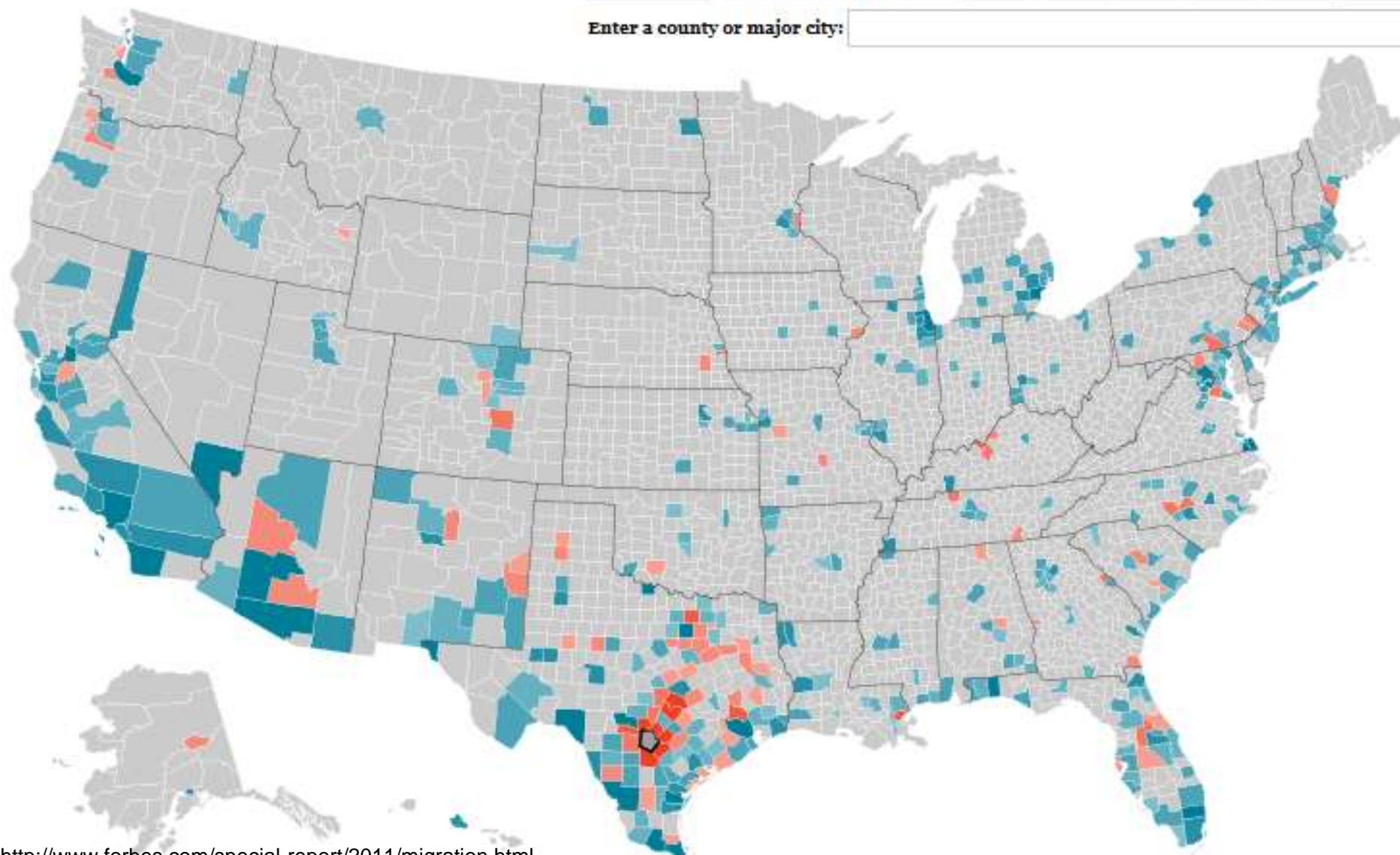
2008

2009

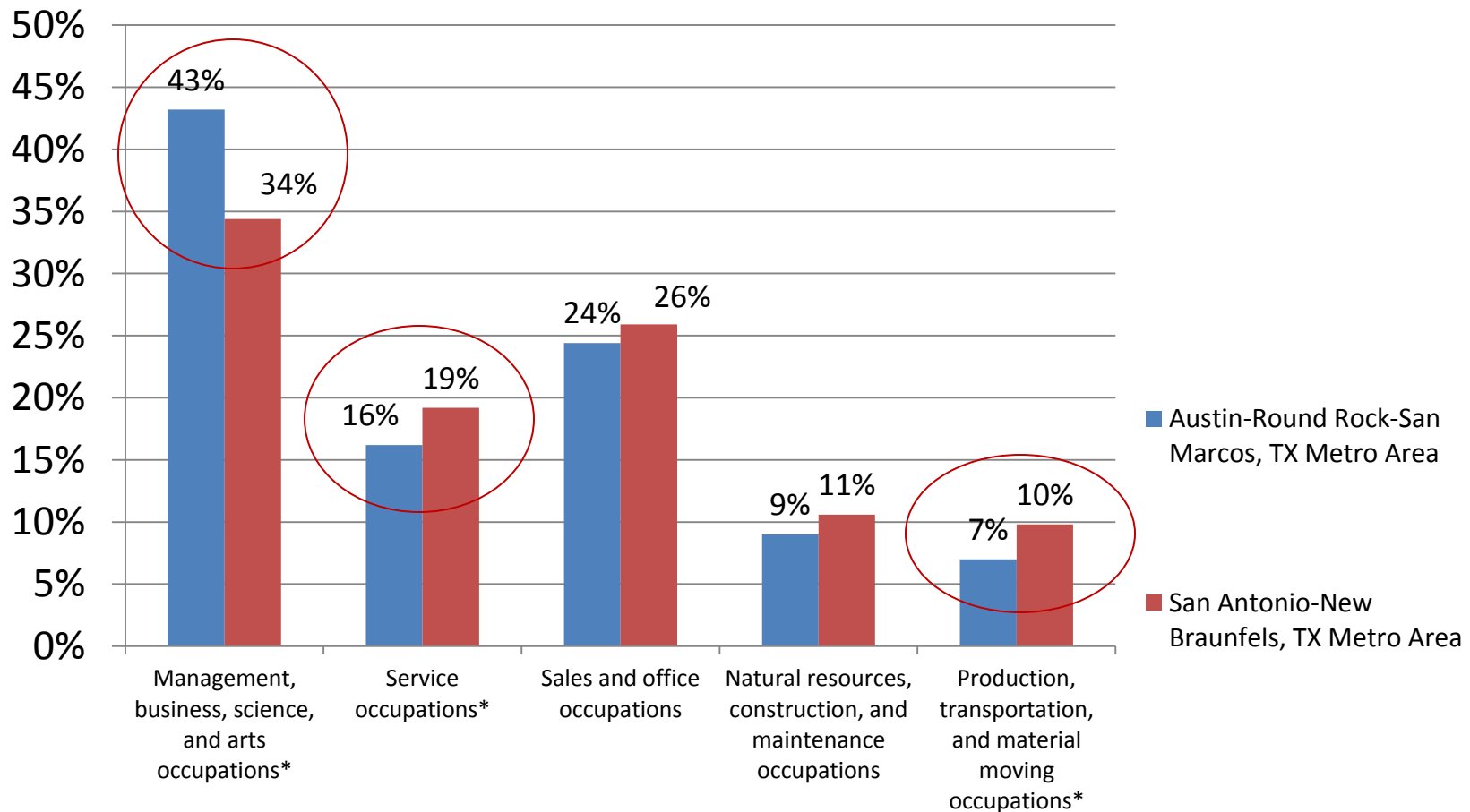
2010



Enter a county or major city:



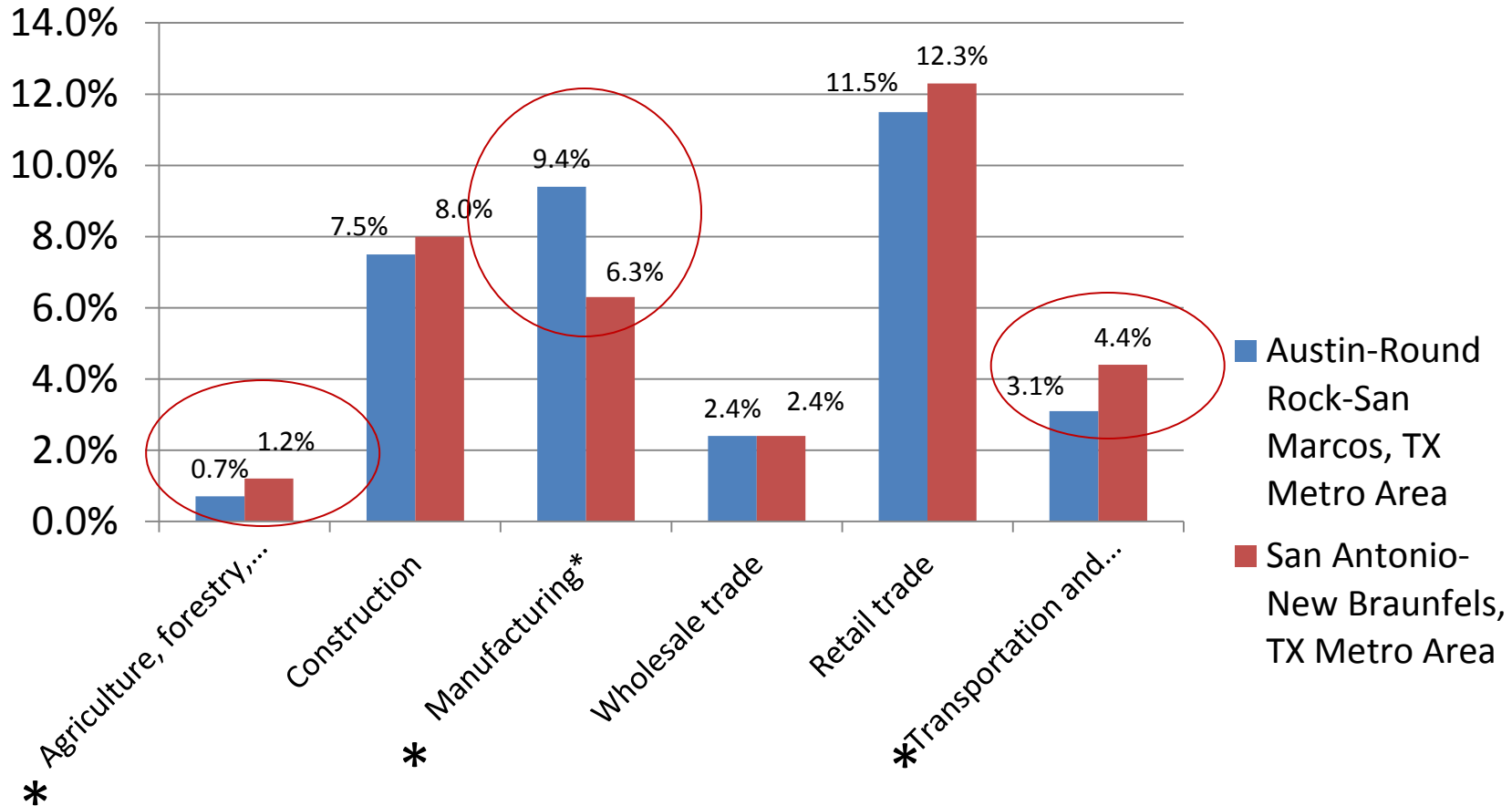
Percent of Labor Force by Occupation, San Antonio and Austin Metro Areas, 2010



Source: U.S. Census Bureau, American Community Survey, 1-Year Sample, 2010

* MSAs are significantly different at $p < .05$

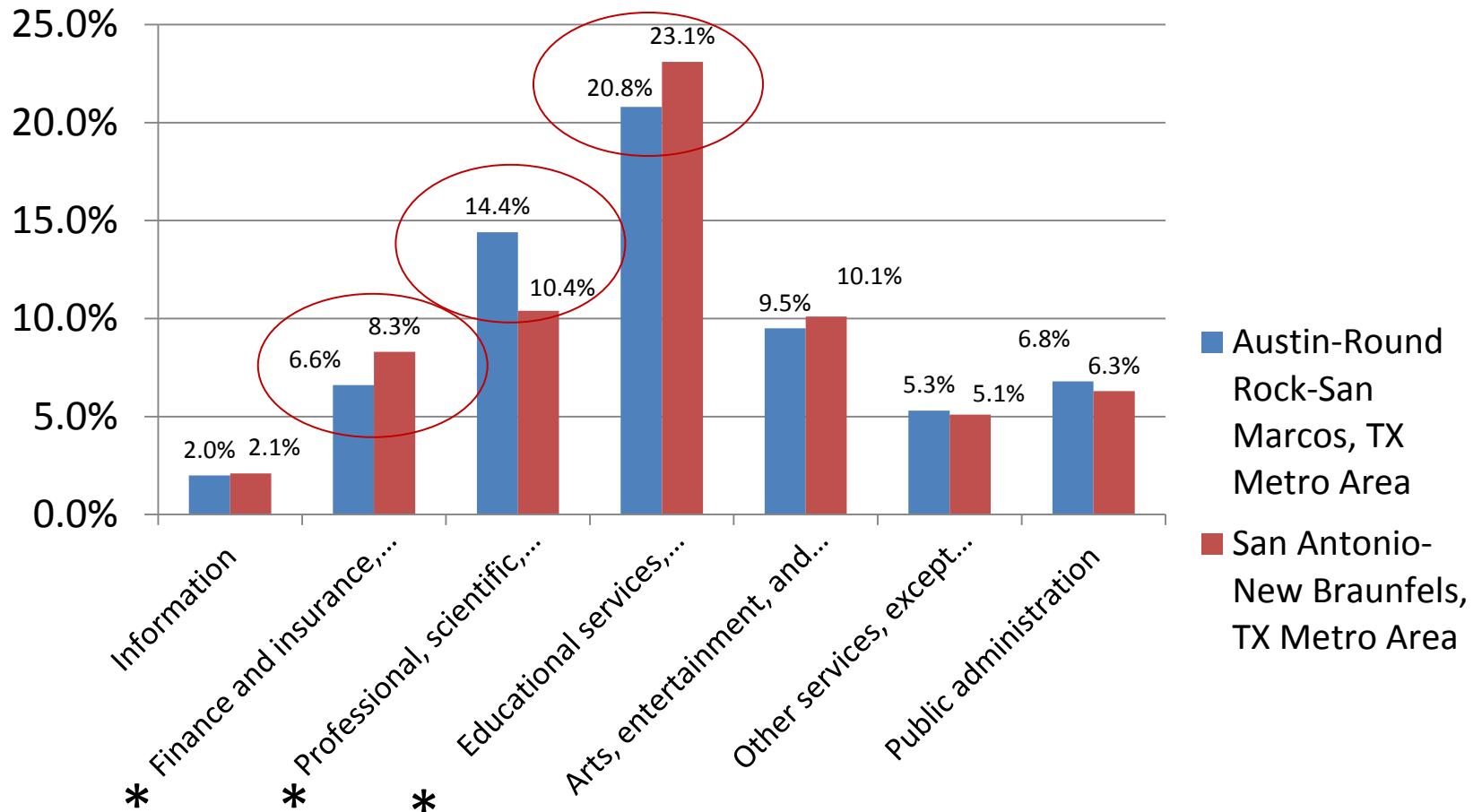
Percent of the Labor Force by Industry, San Antonio and Austin Metro Areas, 2010



Source: U.S. Census Bureau, American Community Survey, 1-Year Sample, 2010

* MSAs are significantly different at $p < .05$

Percent of the Labor Force by Industry, San Antonio and Austin Metro Areas, 2010

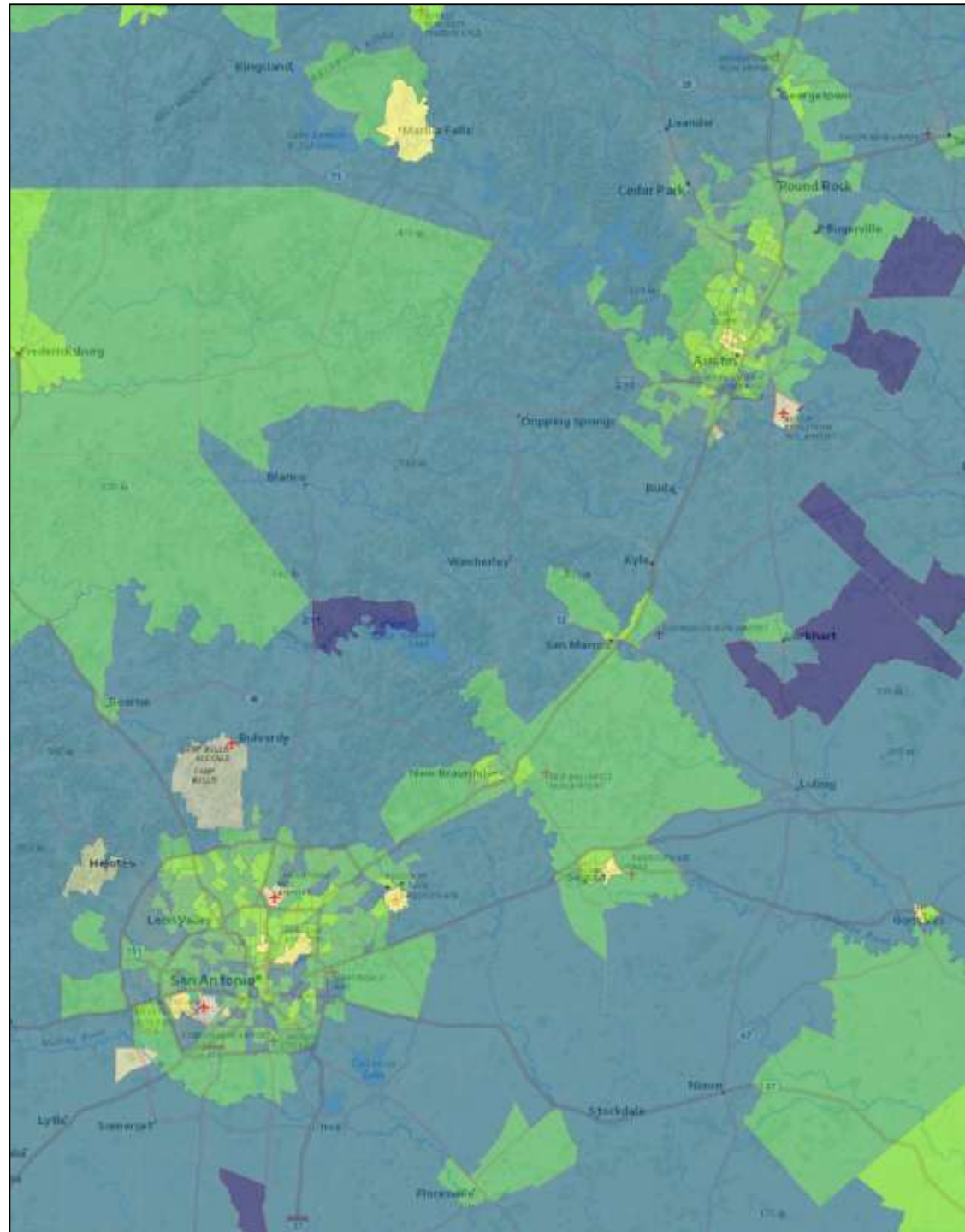
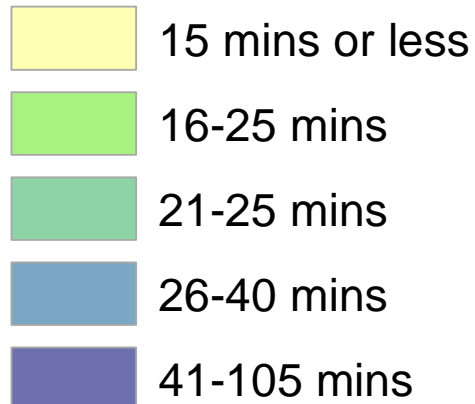


Source: U.S. Census Bureau, American Community Survey, 1-Year Sample, 2010

* MSAs are significantly different at $p < .05$

Mean Travel Time to Work, Texas Census Tracts, 2006-2010

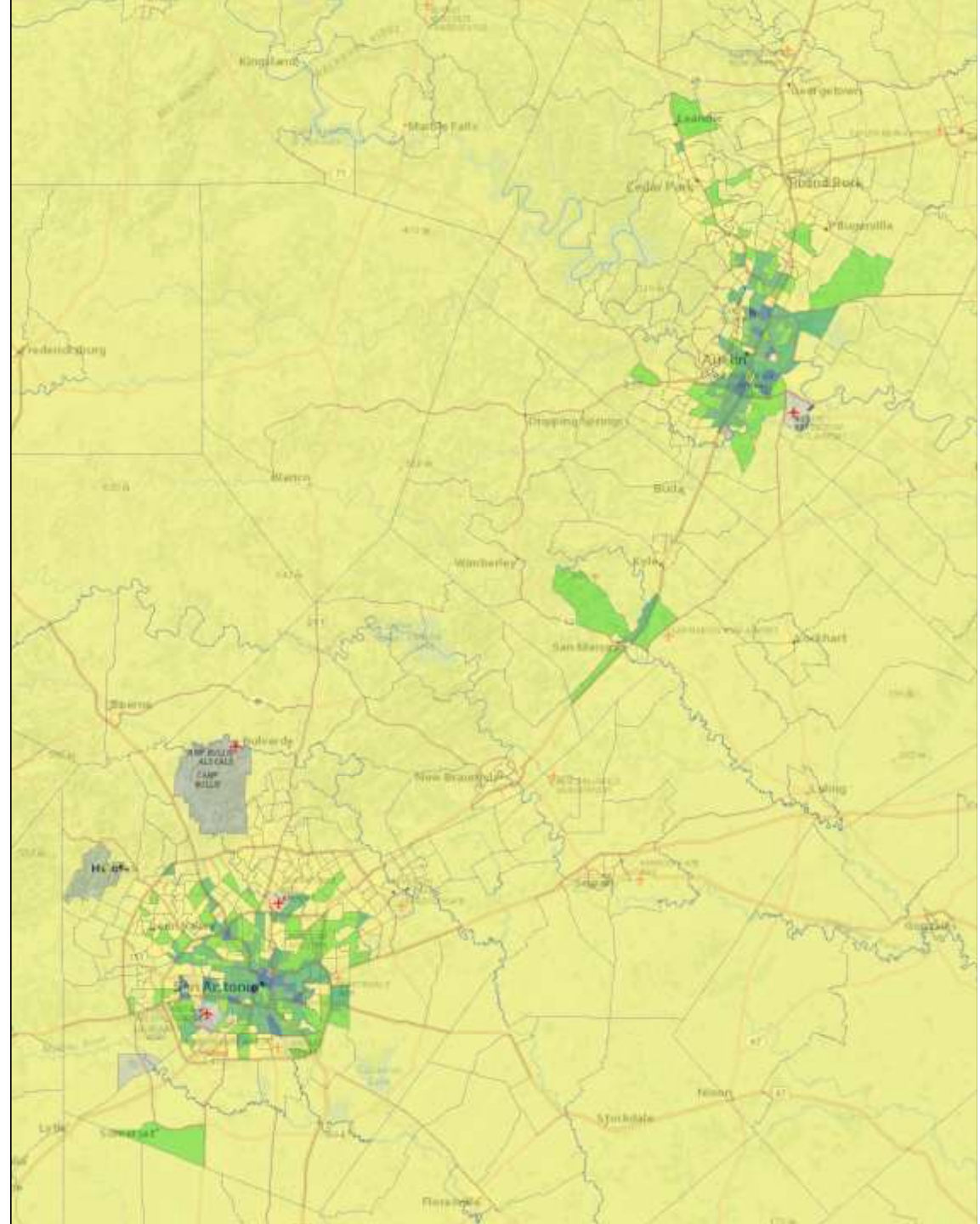
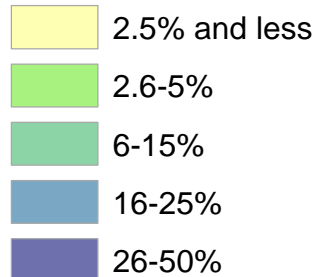
Mean travel time



Source: U.S. Census Bureau, American Community Survey, 5-Year Sample, 2006-2010

Percent of Workers that Commute on Public Transit, Texas Census Tracts, 2006-2010

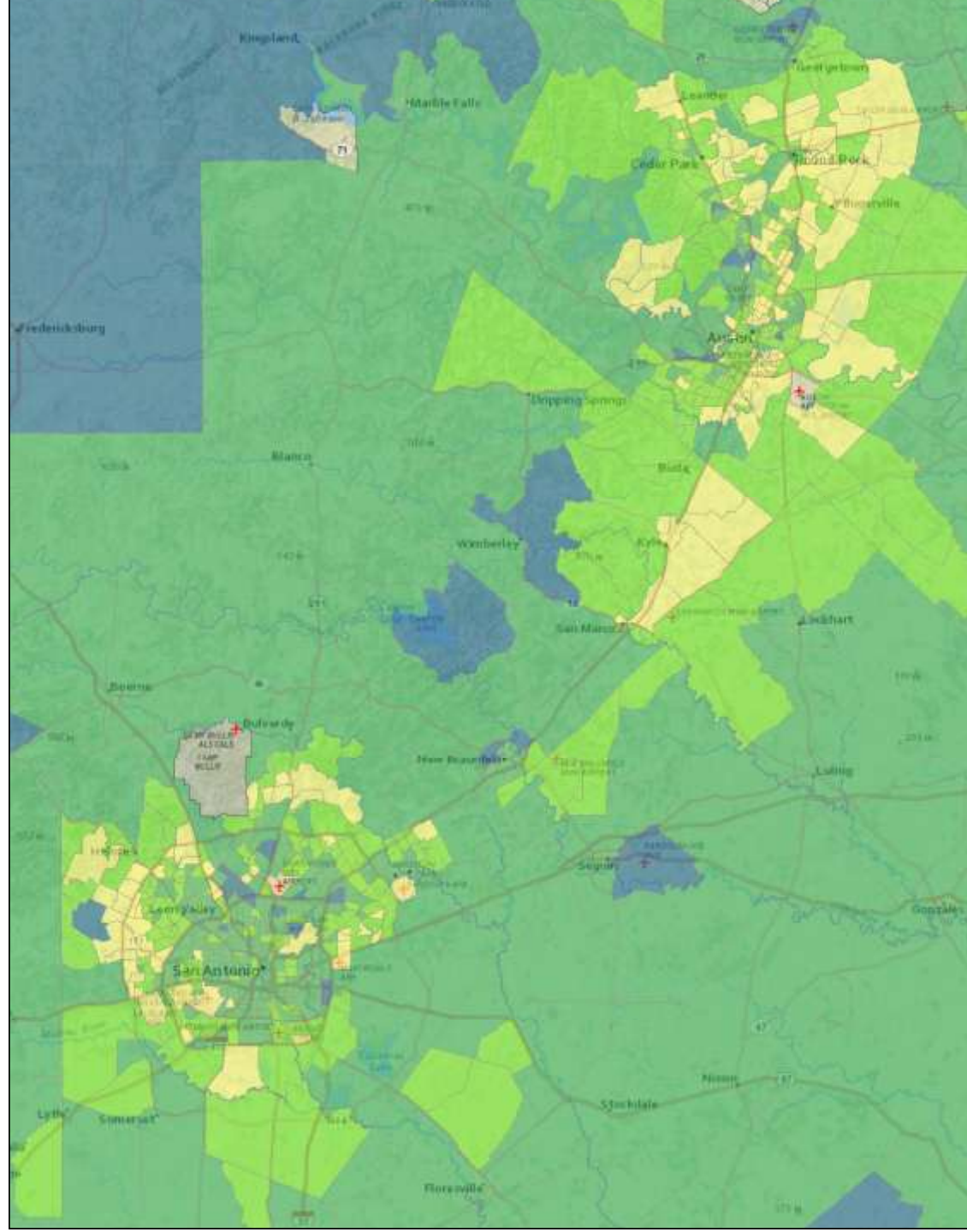
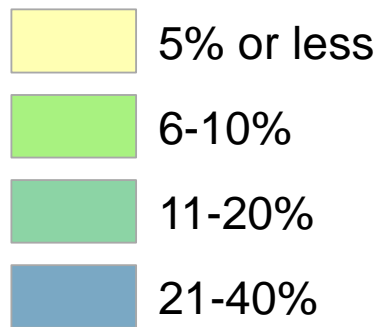
Percent that Commute on Public Transit



Source: U.S. Census Bureau, American Community Survey, 5-Year Sample, 2006-2010

Percent of Population Aged 65 Years and More, Texas Census Tracts, 2006-2010c

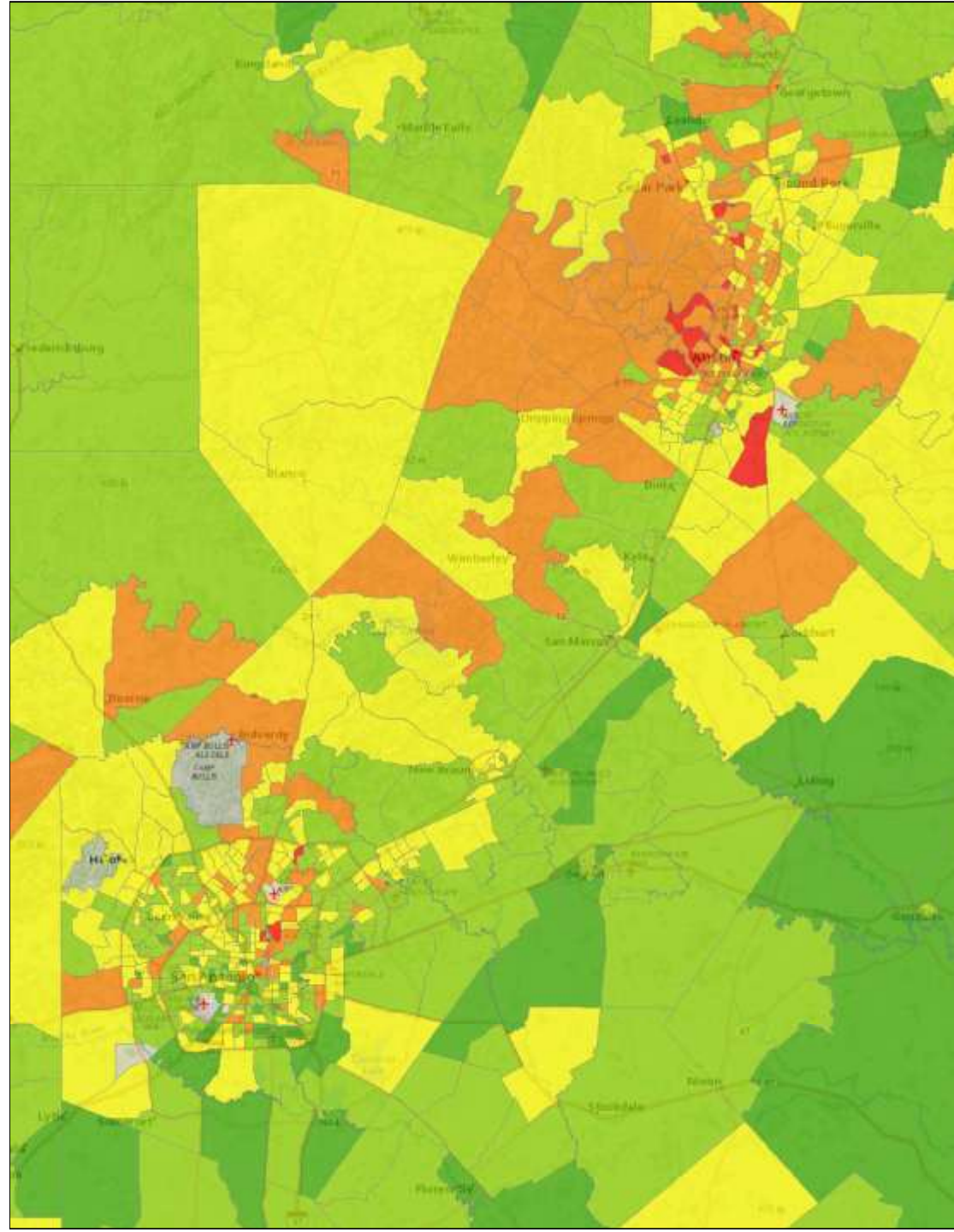
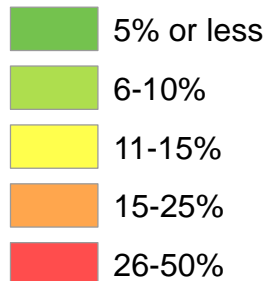
Percent 65 plus



Source: U.S. Census Bureau, American Community Survey, 5-Year Sample, 2006-2010

Percent Labor Force Employed in Professional, Scientific, Management Industry, Texas Census Tracts, 2006-2010c

Professional, Science, Management %

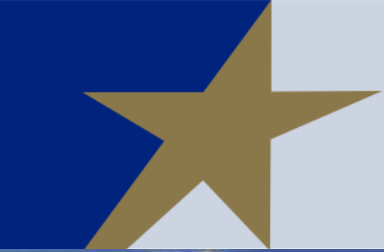


Source: U.S. Census Bureau, American Community Survey, 5-Year Sample, 2006-2010



Summary

- Many similarities in population, social, and economic characteristics
- Some differences in race, ethnic, educational attainment, family structure, income, and labor force/economy
- Differences between the two metro areas may present potential



Demographics and Destiny

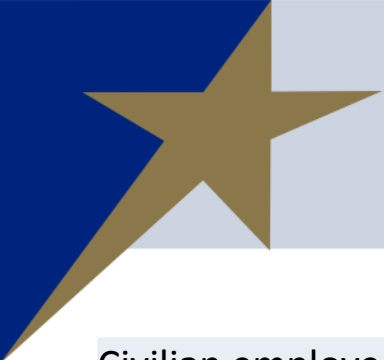


Lloyd Potter, Ph.D., M.P.H.

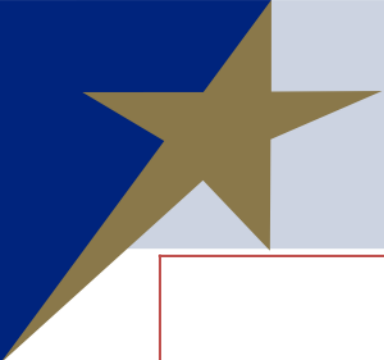
Office: (512) 463-8390 or (210) 458-6530

Email: Lloyd.Potter@osd.state.tx.us

Internet: <http://osd.state.tx.us>



Civilian employed population 16 years and over	860,254	958,883
Agriculture, forestry, fishing and hunting, and mining*	0.7%	1.2%
Construction	7.5%	8.0%
Manufacturing*	9.4%	6.3%
Wholesale trade	2.4%	2.4%
Retail trade	11.5%	12.3%
Transportation and warehousing, and utilities*	3.1%	4.4%
Information	2.0%	2.1%
Finance and insurance, and real estate and rental and leasing*	6.6%	8.3%
Professional, scientific, and management, and administrative and waste management services*	14.4%	10.4%
Educational services, and health care and social assistance*	20.8%	23.1%
Arts, entertainment, and recreation, and accommodation and food services	9.5%	10.1%
Other services, except public administration	5.3%	5.1%
Public administration	6.8%	6.3%



	Austin-Round Rock-San Marcos, TX Metro Area	San Antonio-New Braunfels, TX Metro Area
Civilian employed population 16 years and over	860,254	958,883
Management, business, science, and arts occupations*	43.2%	34.4%
Service occupations*	16.2%	19.2%
Sales and office occupations	24.4%	25.9%
Natural resources, construction, and maintenance occupations	9.0%	10.6%
Production, transportation, and material moving occupations*	7.0%	9.8%

Source: U.S. Census Bureau, American Community Survey, 1-Year Sample, 2010

* MSAs are significantly different at $p < .05$